

**Q J 2 0 8 P**

1PH, 220/240V – 50Hz

## Application Range

Compressor Cooling	Natural	
Eva. Temp. Range	-10°C ~ 12°C	14°F ~ 54°F
Condensing Temp.	65°C max.	149°F max.
Return Gas Temp.	35°C max.	95°F max.
Discharge gas Temp.	115°C max.	239°F max.
Motor Wire Temp.	130°C max.	266°F max.

## Rated Performance

Capacity	11,700/11,800 Btu/h	3,429/3,458 Watts
Motor Input	1,114/1,135 W	
Current	5.1/4.9 A	
EER	10.5/10.4 Btu/W.h	3.08/3.05 W/W

## Compressor Data

Design	Rolling Piston Typed Rotary
Displacement	20.8 cc/rev      1.27 in <sup>3</sup> /rev
Oil / Oil Charge	SUNISO 4GSI / 410±10 cc
Weight	15.2 Kg      33.5 lb

## Motor Data

Motor Type	2 Pole Induction (PSC)
Rated Output	900 W
Winding Resistance (at 25°C)	Main      Not Fixed Sub      Not Fixed
Voltage Range	198 V to 264 V
Locked Rotor Amps.	Not Fixed

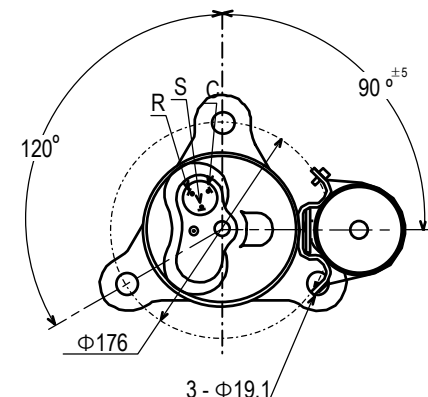
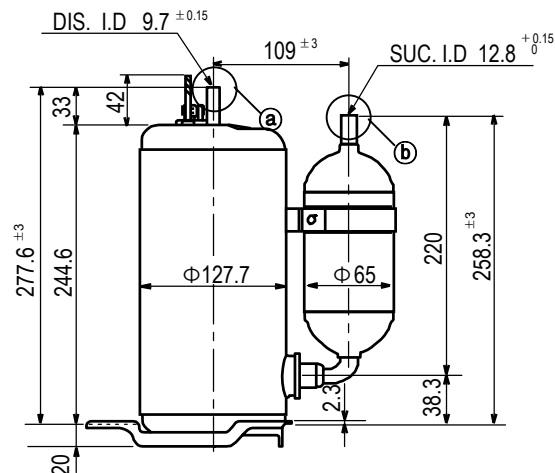
## Electrical Components

Running Capacitor	30 $\mu$ F    370 VAC (Not Fixed)
Overload Protector	MRA 12080 – 12026 ( Texas Instruments ) Not Fixed

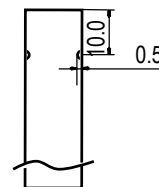
## Capacity Test Conditions

Evaporating Temp.	7.2°C	45°F
Condensing Temp.	54.4°C	130°F
Return Gas Temp.	35.0°C	95°F
Liquid Temp.	46.1°C	115°F
Ambient Temp.	35.0°C	95°F

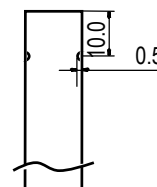
## Standard Dimensions



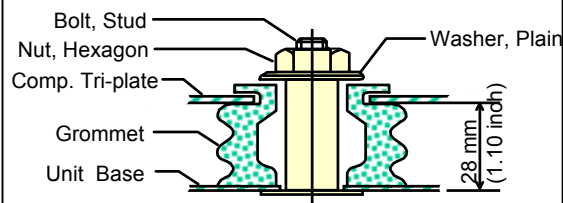
Detail of ①



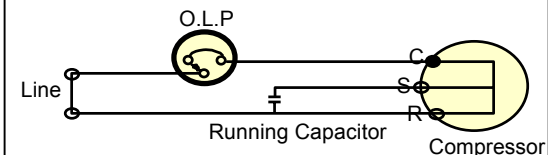
Detail of ②



## Compressor Mounting



## Wiring Diagram



※ C.S.R mark is embossed on a Cover Terminal