

**Q P 3 2 5 P**

1PH, 220/240V – 50Hz

## Application Range

Compressor Cooling	Natural	
Eva. Temp. Range	-10°C ~ 12°C	14°F ~ 54°F
Condensing Temp.	65°C max.	149°F max.
Return Gas Temp.	35°C max.	95°F max.
Discharge gas Temp.	115°C max.	239°F max.
Motor Wire Temp.	130°C max.	266°F max.

## Rated Performance

Capacity	19,200/19,300 Btu/h	5,627/5,657 Watts
Motor Input	1,778/1,856 W	
Current	8.4 / 8.4 A	
EER	10.8 / 10.4 Btu/W.h	3.17/3.05 W/W

## Compressor Data

Design	Rolling Piston Typed Rotary
Displacement	32.5 cc/rev      1.98 in <sup>3</sup> / rev
Oil / Oil Charge	SUNISO 4GSI or ATMOS M60 / 700 cc
Weight	21.0 Kg      46.3 lb

## Motor Data

Motor Type	2 Pole Induction (PSC)
Rated Output	2,300 W
Winding Resistance	Main    1.01 ± 7% Ω
(at 25°C)	Sub    1.53 ± 7% Ω
Voltage Range	198 V to 264 V
Locked Rotor Amps.	68 A

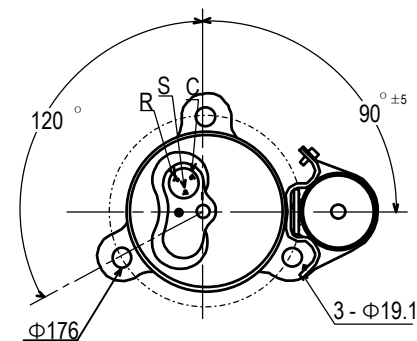
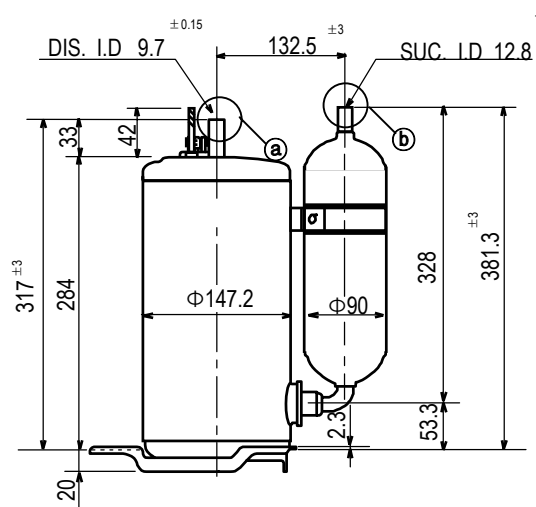
## Electrical Components

Running Capacitor	55 μF 400 VAC
Overload Protector	Internal Type

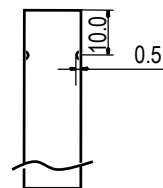
## Capacity Test Conditions

Evaporating Temp.	7.2°C	45°F
Condensing Temp.	54.4°C	130°F
Return Gas Temp.	35.0°C	95°F
Liquid Temp.	46.1°C	115°F
Ambient Temp.	35.0°C	95°F

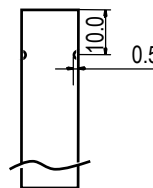
## Standard Dimensions



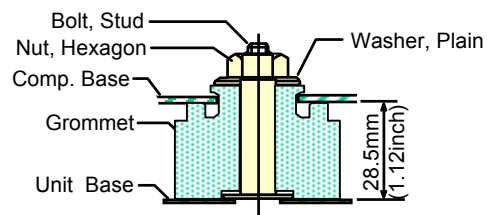
Detail of ①



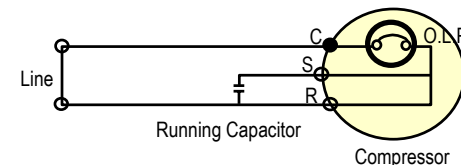
Detail of ②



## Compressor Mounting



## Wiring Diagram



※ C.S.R mark is embossed on a Cover Terminal